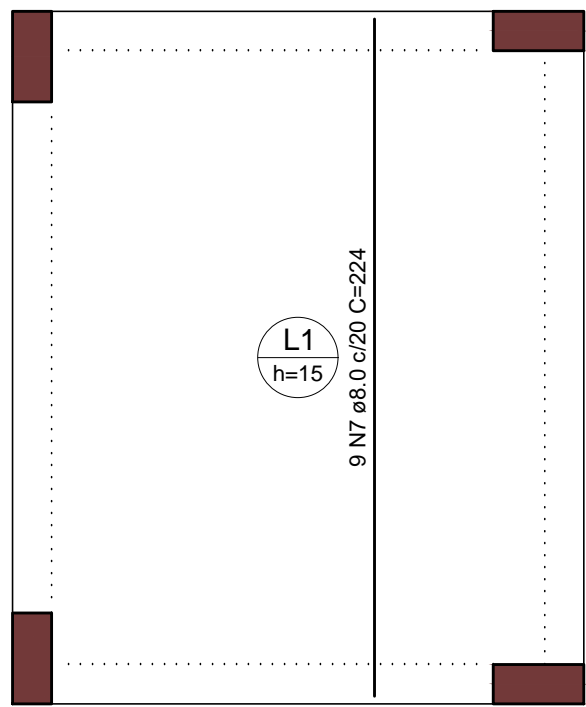
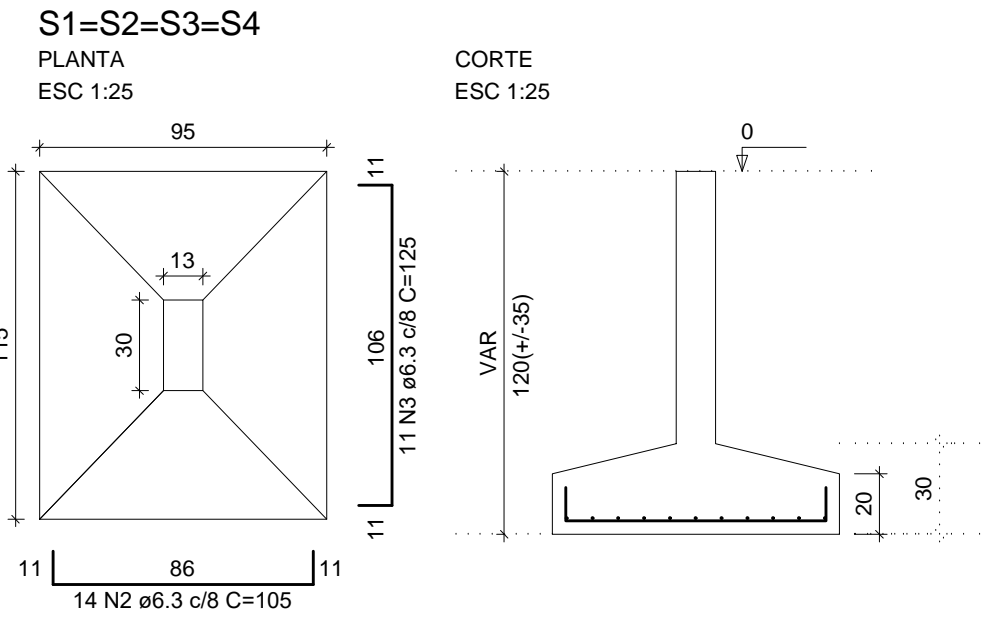


Armação positiva (Eixo X)
escala 1:25



Armação positiva (Eixo Y)
escala 1:25



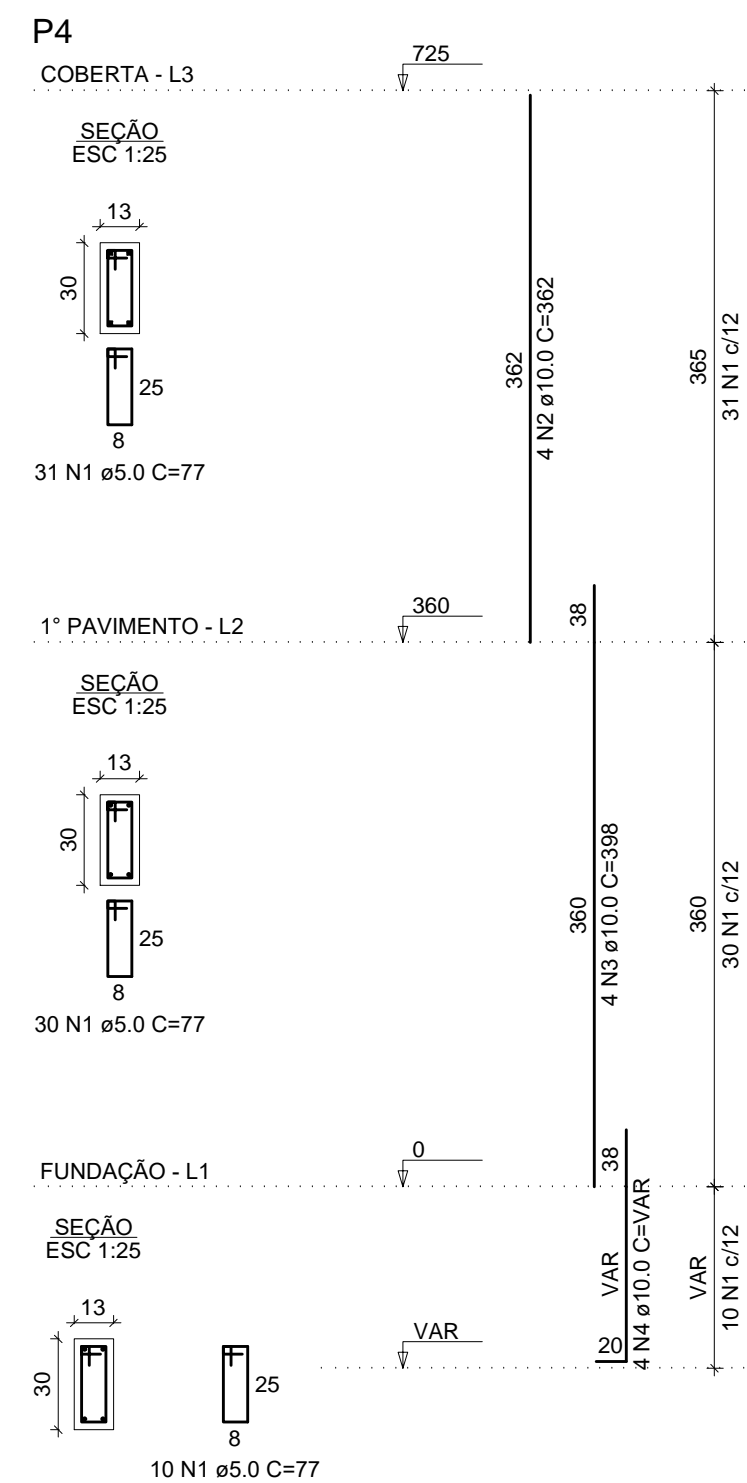
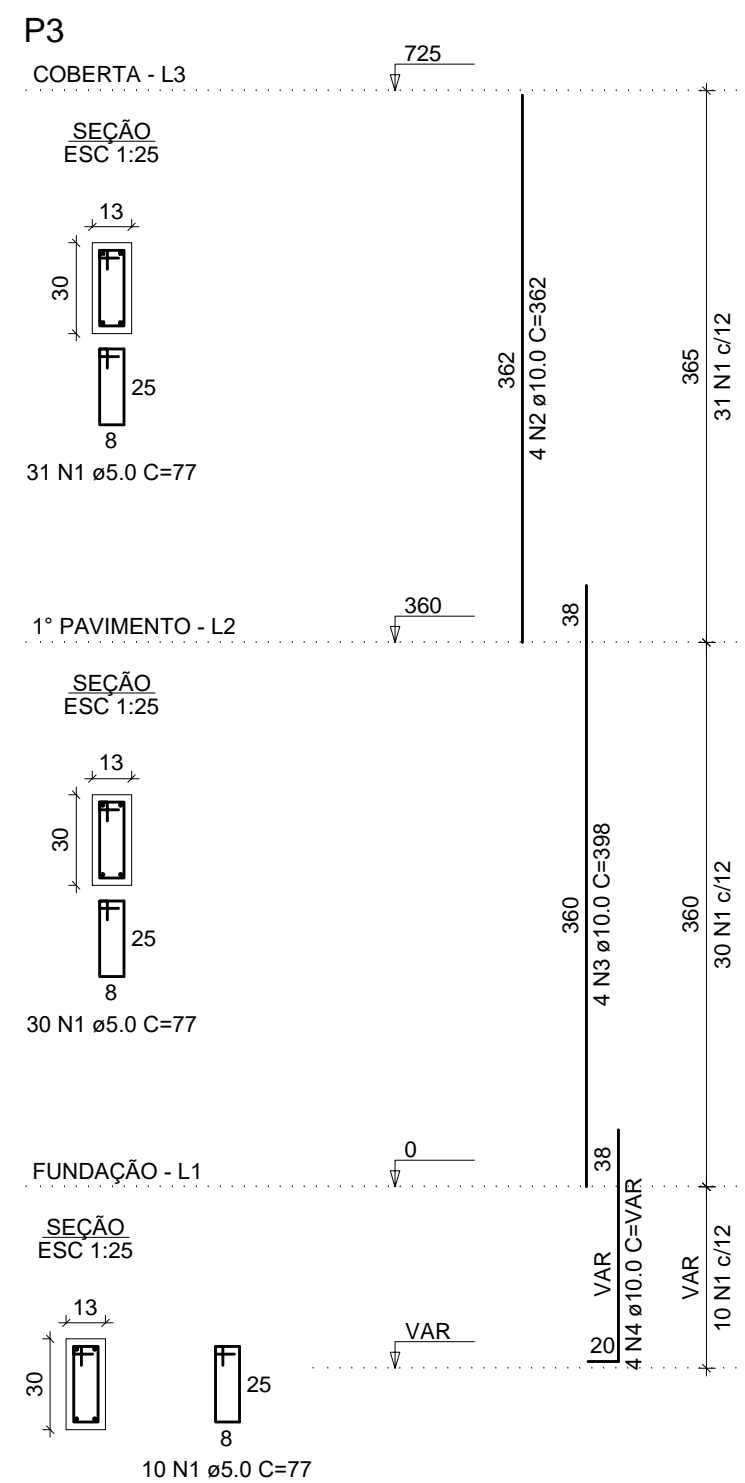
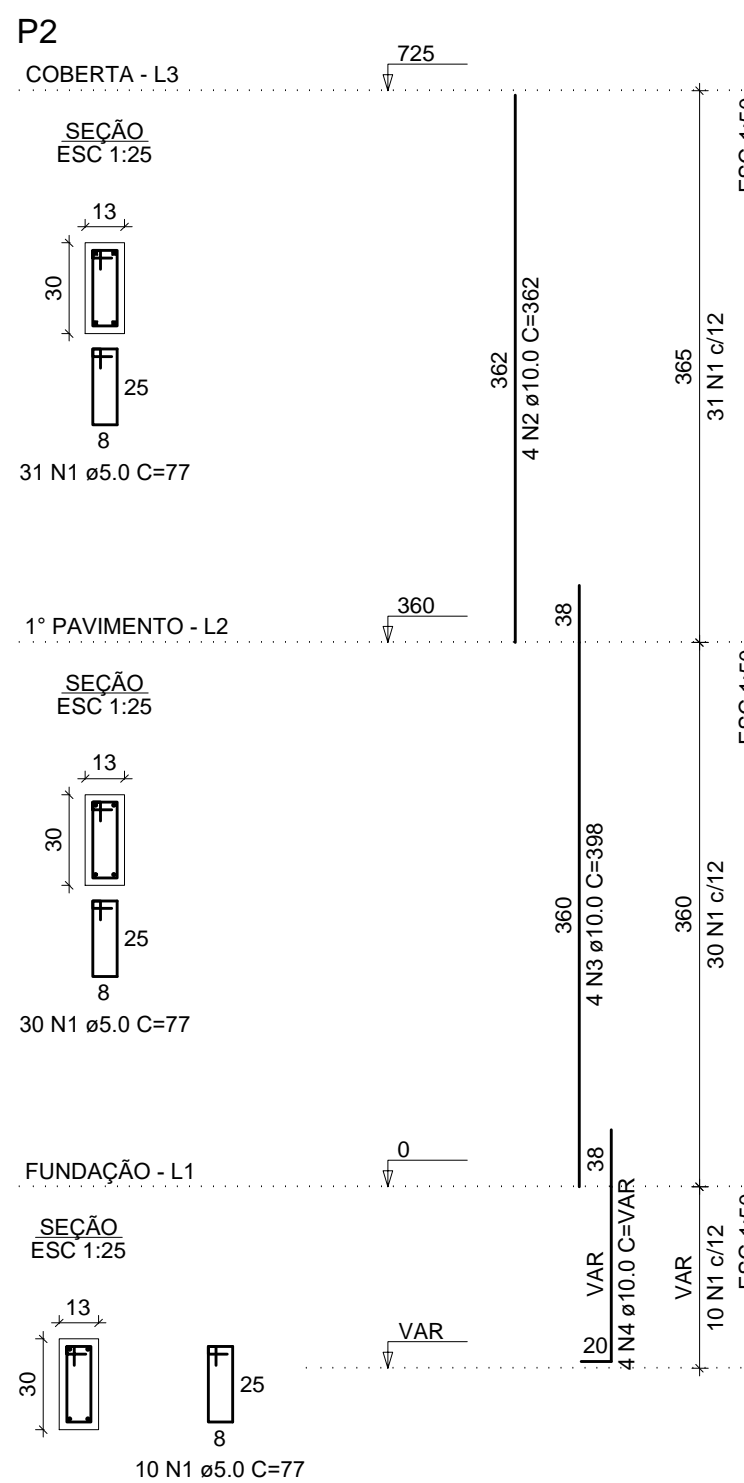
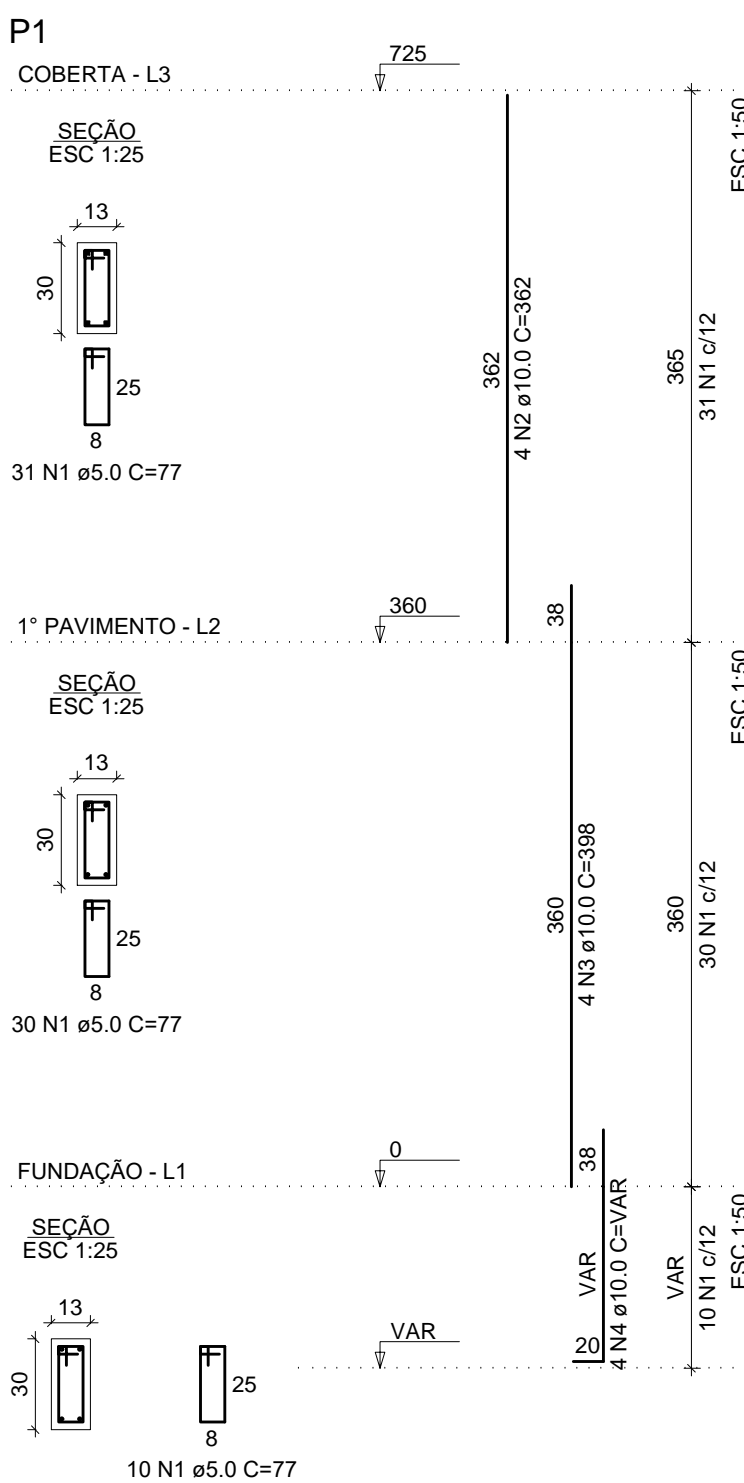
RELAÇÃO DO AÇO

AÇO	N	DIAM (mm)	QUANT	C.UNIT (cm)	C.TOTAL (cm)
CA50	1	5.0	23	184	3941
CA50	2	6.3	56	105	5890
CA50	3	6.3	44	125	5500
CA50	4	8.0	16	195	3120
CA50	5	8.0	17	184	3128
CA50	6	8.0	16	235	3760
CA50	7	8.0	12	224	2688
CA50	8	10.0	4	226	904
CA50	9	10.0	2	224	448
CA50	10	10.0	2	243	486
CA50	11	10.0	2	289	578

RESUMO DO AÇO

AÇO	DIAM (mm)	C.TOTAL (m)	PESO + 0% (kg)
CA50	6.3	113.8	27.8
CA50	8.0	127	50.1
CA60	10.0	24.2	14.9
CA60	5.0	38.4	5.9
PESO TOTAL (kg)			
CA50	92.8		
CA60	5.9		

Volume de concreto (C-25) = 2.37 m³
Área de forma = 20.32 m²



RELAÇÃO DO AÇO

AÇO	N	DIAM (mm)	QUANT	C.UNIT (cm)	C.TOTAL (cm)
CA60	1	5.0	284	77	21868
CA60	2	10.0	16	362	5792
CA60	3	10.0	16	368	6368
CA60	4	10.0	16	VAR	VAR

RESUMO DO AÇO

AÇO	DIAM (mm)	C.TOTAL (m)	PESO + 0% (kg)
CA50	10.0	149.1	91.9
CA60	5.0	218.7	33.7
PESO TOTAL (kg)			
CA50	91.9		
CA60	33.7		

Volume de concreto (C-25) = 1.32 m³
Área de forma = 29.07 m²